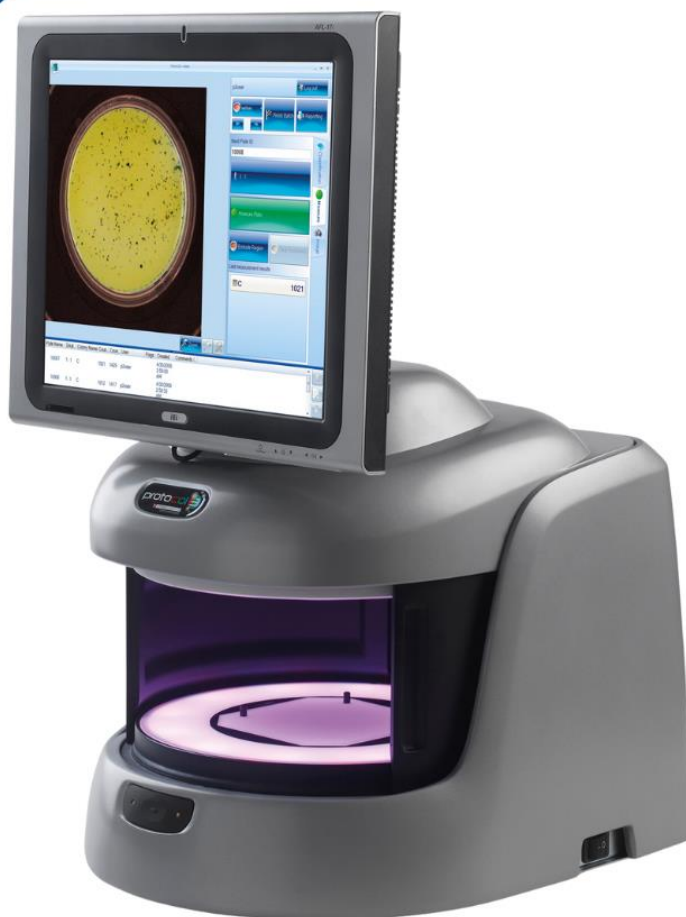


Software Installation



ProtoCOL³
QUICK GUIDE

Table of Contents

Before You Begin.....	3
Running Software Installer	3
Software Key Activation Method	9
Hardware Key Activation Method	12
Run Calibration Installer.....	14

Before You Begin

This guide is designed to show you the simplest and most efficient way of installing the ProtoCOL 3 software onto your PC. Following simple click-through instructions, the installer will proceed to install both the software and the required database and management system for the operation of the software. Please refer to the full software installation guide if wanting to manually operate the installation procedure.

If any issues are encountered during the software installation process, please contact your distributor or Synbiosis directly on support@synbiosis.com for further assistance.

Running Software Installer

- 1) Start PC, log onto the PC as an Administrator and shut all running software down.
- 2) Insert the Synbiosis USB flash drive you should have received with the device (contact Synbiosis support if no USB drive is present)
- 3) Run the 'Setup.exe' application to begin the installation process.
- 4) Click 'OK' on the opening Window as seen in **Figure 1**, to start SQL Installation.

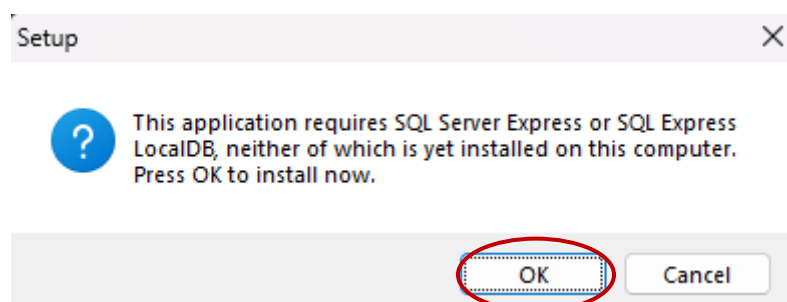


Figure 1.

- 5) Select your SQL installation of choice, SQL Server Express is recommended in vast majority of cases to allow multiple users to use the software. Tick the 'Install with minimal user interaction' box. Click on 'Next' (**Figure 2**).

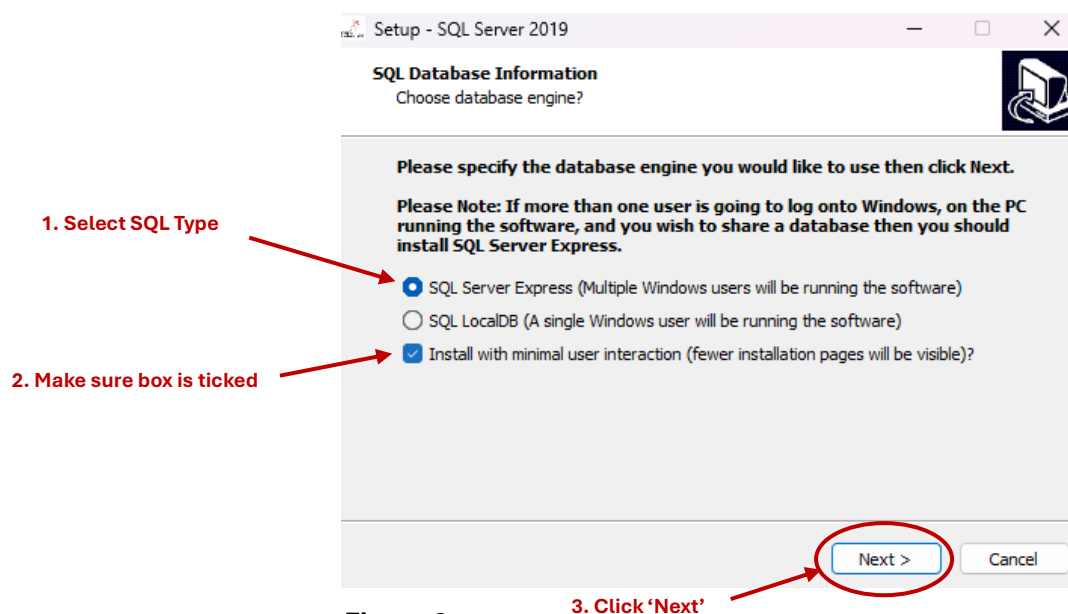


Figure 2.

- 6) Click on 'Install' (see **Figure 3**).

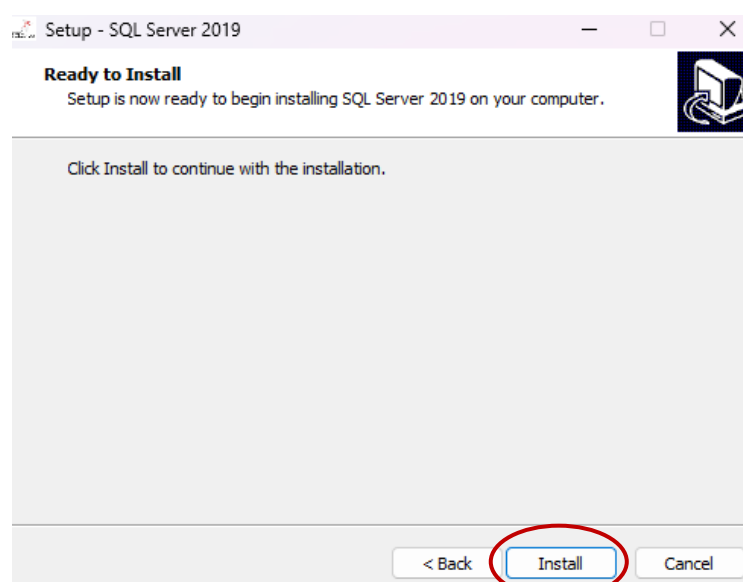


Figure 3.

- 7) Wait for SQL Server process to take place (**Figure 4**).

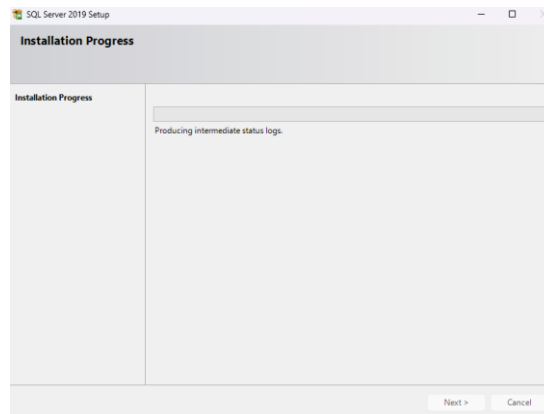


Figure 4.

- 8) Azure Data Studio pop-up (**Figure 5**) will appear. Click on 'Install'.

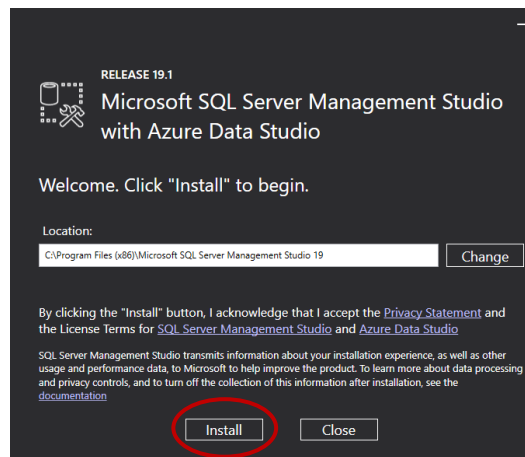


Figure 5.

- 9) Click on 'Close'. PC can be restarted once the rest of the installation is complete (**Figure 6**).

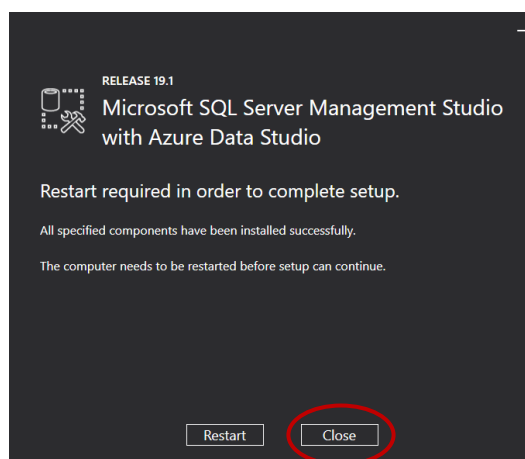


Figure 6.

10) Click on 'Finish' (**Figure 7**).

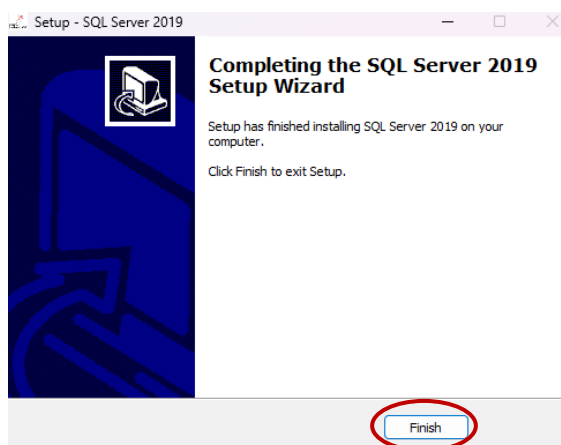


Figure 7.

11) The ProtoCOL software installer is then prompted to open. Click on 'Next' (**Figure 8**).



Figure 8.

12) Select the correct device from the 'Hardware Information' list and click 'Next' (**Figure 9**).

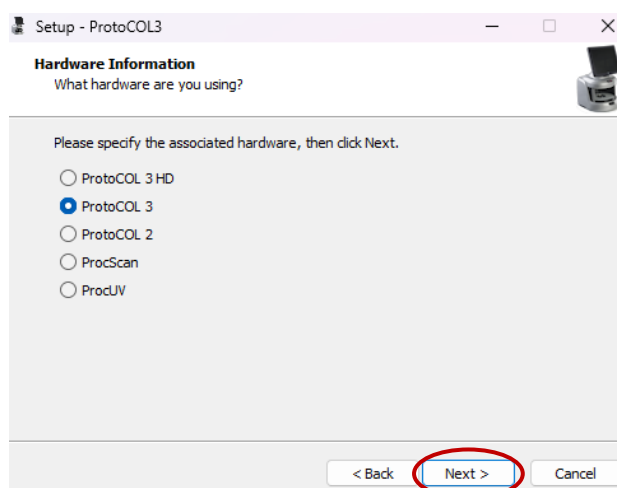


Figure 9.

13) Click 'Next' (**Figure 10**).

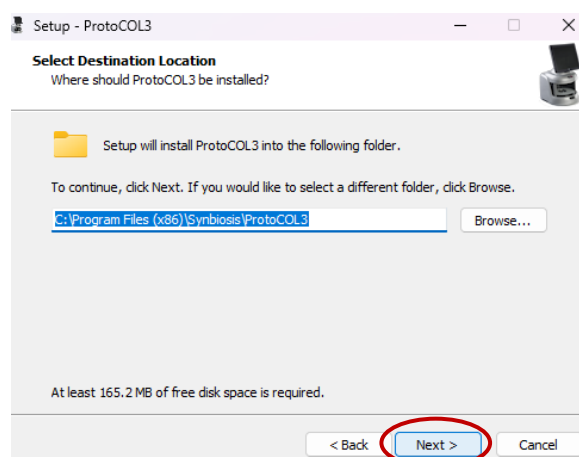


Figure 10.

14) Click 'Next' (**Figure 11**).

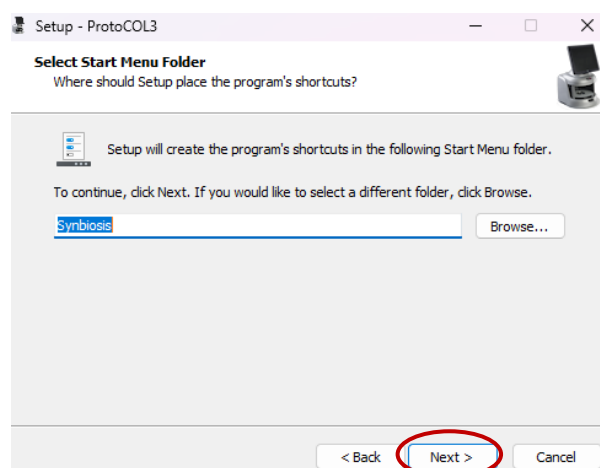


Figure 11.

15) Click 'Install' (**Figure 12**).

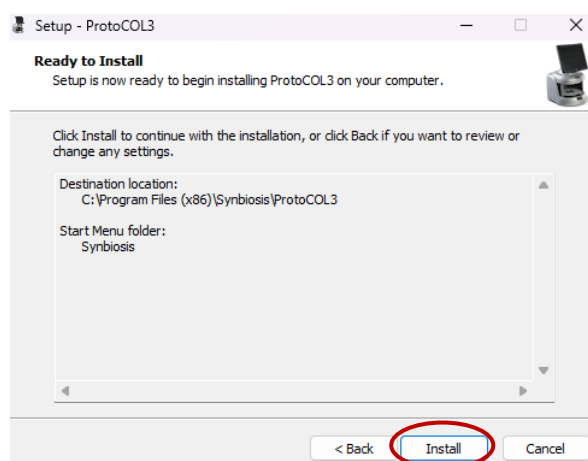


Figure 12.

- 16) 'Device Driver Installation Wizard' (**Figure 13**) will open on top of the installer. Click 'Next' and then 'Finish' (**Figure 14**). There may be multiple drivers to install, repeat the 'Next' and then 'Finish' procedure as many times as required.

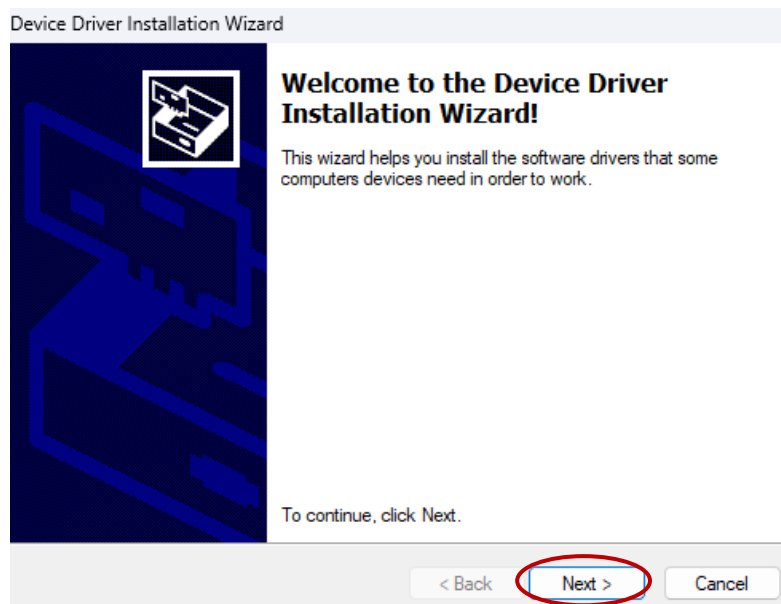


Figure 13.

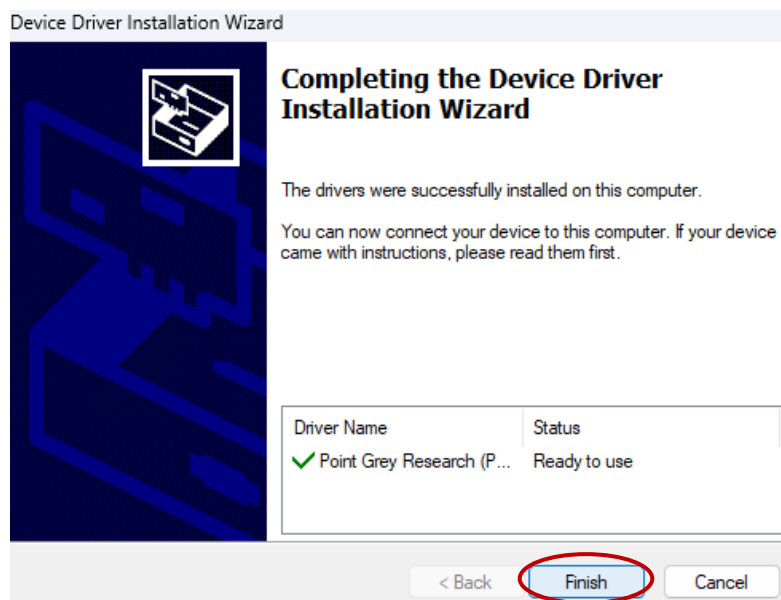


Figure 14.

- 17) When **Figure 15** window opens, if using a physical USB dongle software license then click 'OK', if you are using a media key (this is the most common option) then click on 'Cancel'.

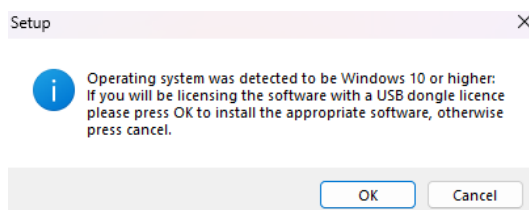


Figure 15.

- 18) Select 'Software Key' if given a media license, and move to step 19. Select 'Hardware Key' if using a physical USB dongle (**Figure 16**) and skip to step 25. Then click 'Next'.

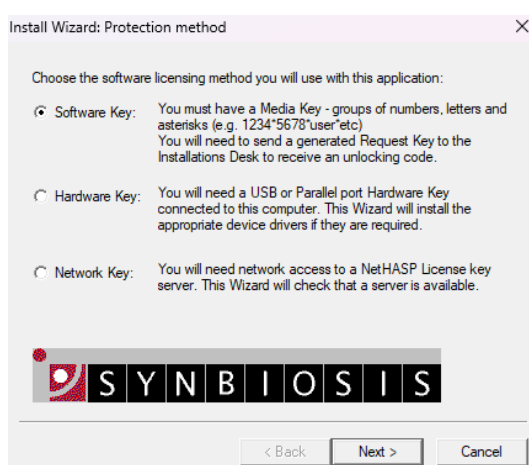


Figure 16.

Software Key Activation Method

- 19) Enter your 'Media Key' into the corresponding box, enter the device serial number in 'Your Name' field, and organization. Then click 'Next' (**Figure 17**).

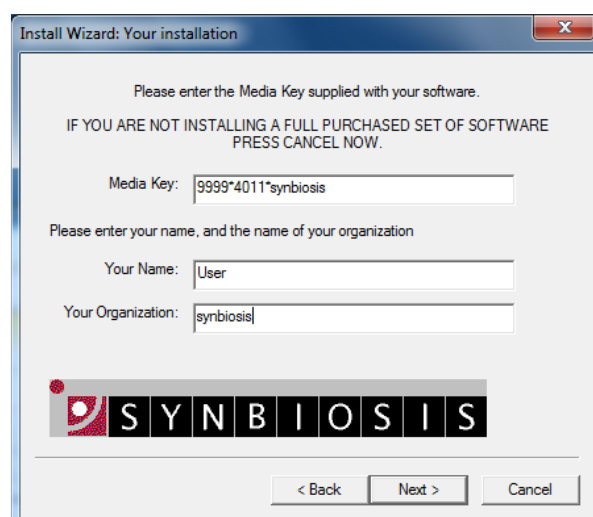


Figure 17.

- 20) Copy and paste the information from your Install Wizard and email to installations@synbiosis.com (example below in **Figure 18** highlighted in blue). You will receive a response email containing a security code required for the next step. If no email is received after 30 minutes, please contact support@synbiosis.com

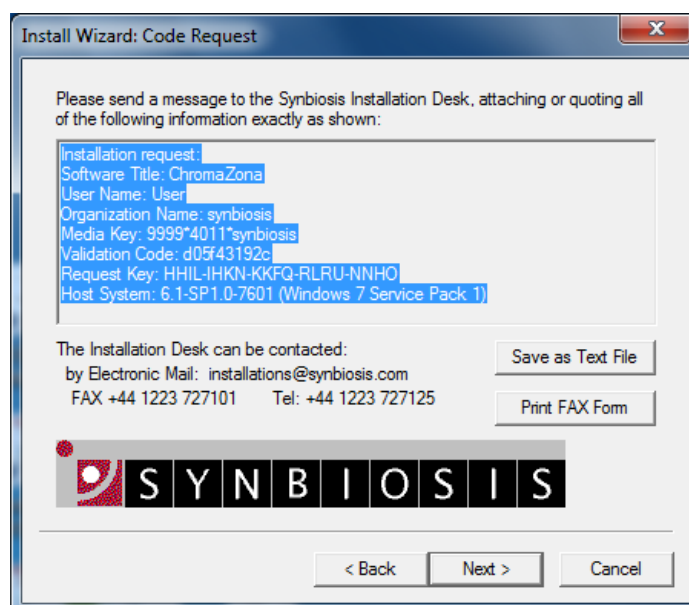


Figure 18.

- 21) Enter the security code received from installations@synbiosis.com and click 'Next' (**Figure 19**).

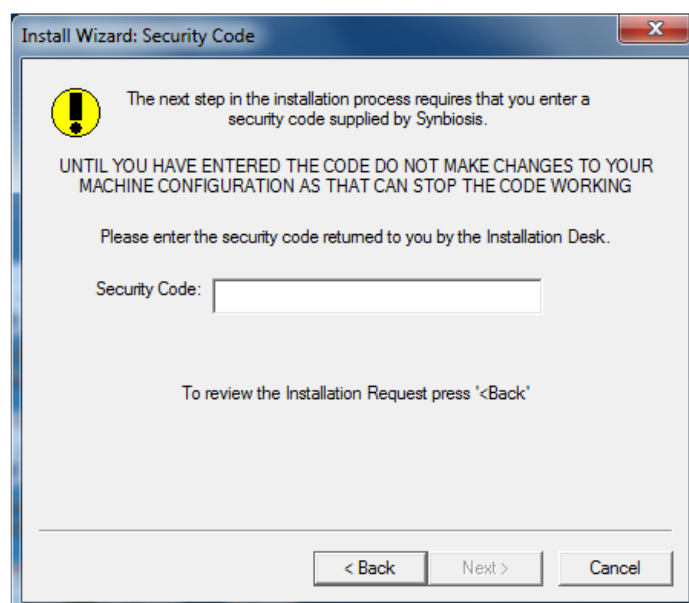


Figure 19.

22) Activation of the software is now complete (**Figure 20**).

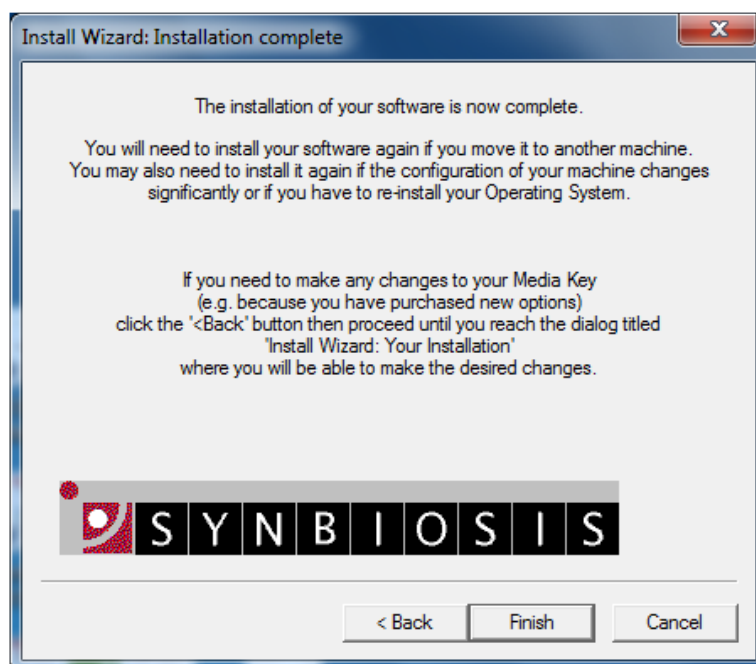


Figure 20.

23) ProtoCOL 3 Setup Wizard is now complete (**Figure 21**). Restart PC to complete installation.



Figure 21.

24) The installation using Software Key Activation is now complete, click on 'Finish'.

Hardware Key Activation Method

25) If selected 'Hardware Key' on step 18, you will be presented with **Figure 22**. Click 'Next'.



Figure 22.

26) Ensure the hardware key is REMOVED, and click 'Next' (**Figure 23**).

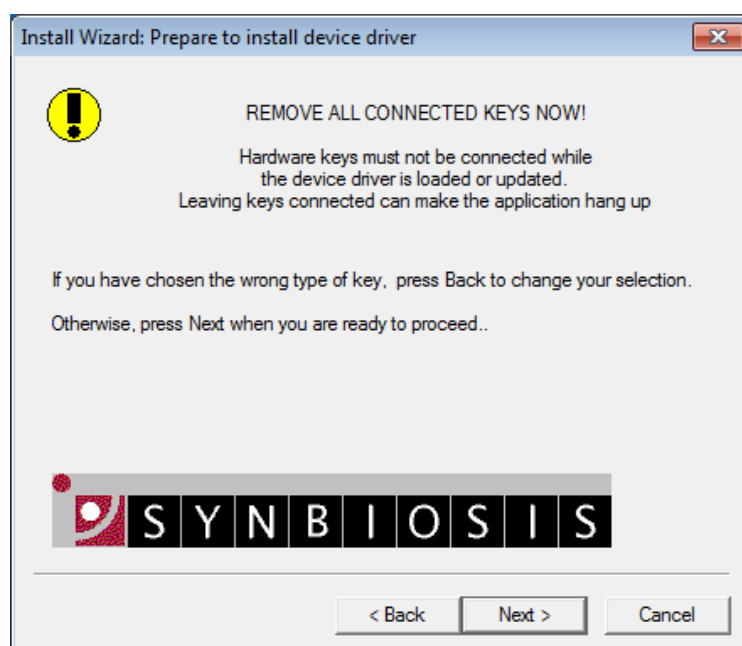


Figure 23.

27) Insert the hardware key and click 'Next' (**Figure 24**).

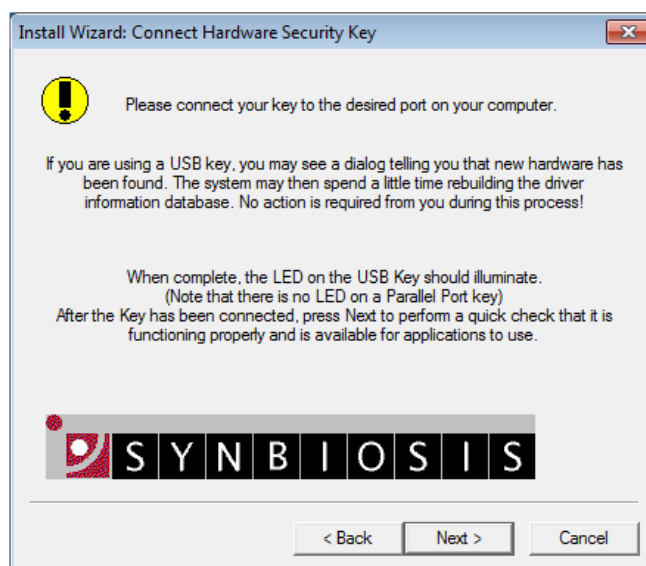


Figure 24.

28) Click 'Finish' (**Figure 25**).

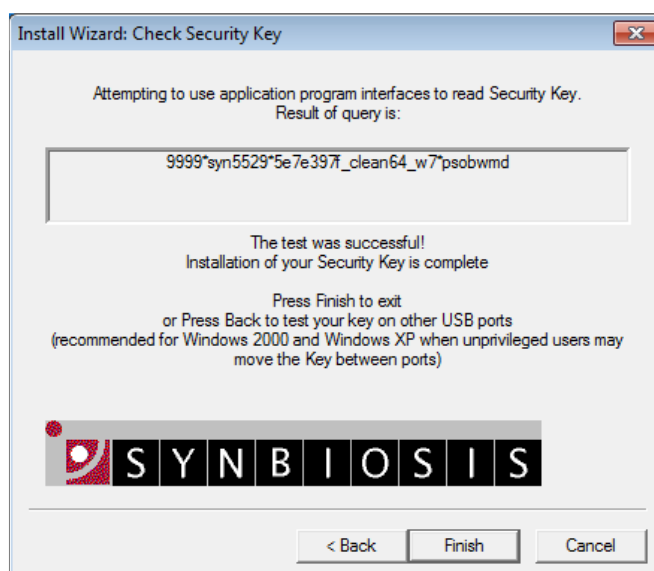


Figure 25.

29) The installation is now complete, click on 'Finish'.

Run Calibration Installer

30) Browse to the Synbiosis USB flash drive in Windows and open up the 'Calibration' folder.

31) Run the 'SetupCalibration' program and then follow the on-screen instructions (**Figure 26**).



Figure 26.

32) Add users to user groups – **See Quick Guide 'Adding a User' for full information.** This is an important step and the device will not function correctly unless the users have been setup.